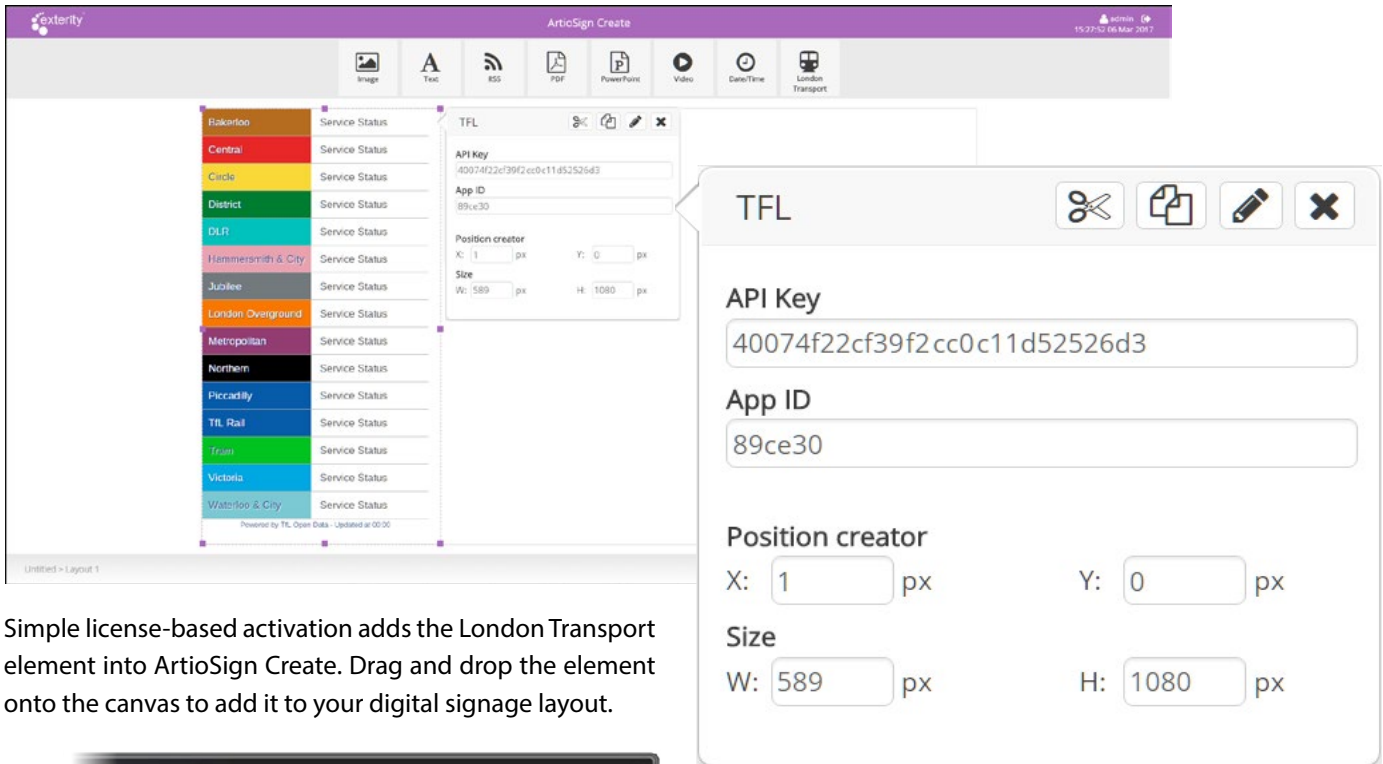
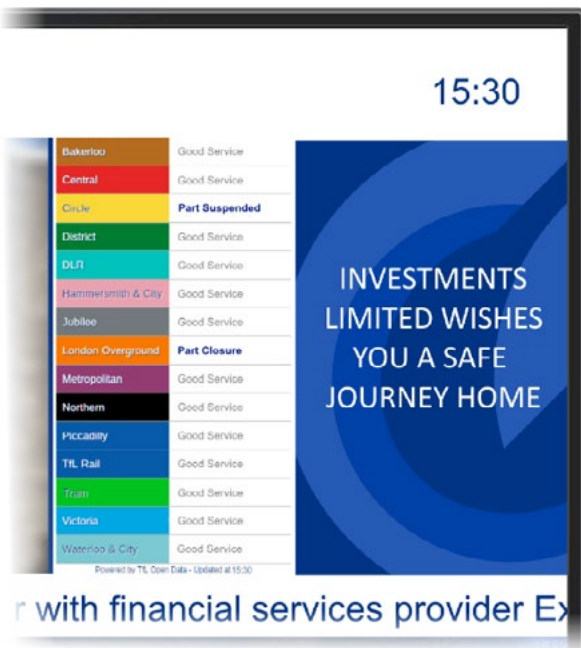


Keep staff and customers informed with up-to-date transport information for London Underground, Overground, rail, and tram services using ArtioSign's London Transport element.



Simple license-based activation adds the London Transport element into ArtioSign Create. Drag and drop the element onto the canvas to add it to your digital signage layout.

Register at <https://api-portal.tfl.gov.uk/signup> to receive a unique API key and App ID. This ensures that the Tfl Open Data service does not restrict data at peak times.



The London Transport element updates every minute to ensure that viewers are kept up to date with the latest transport information.