



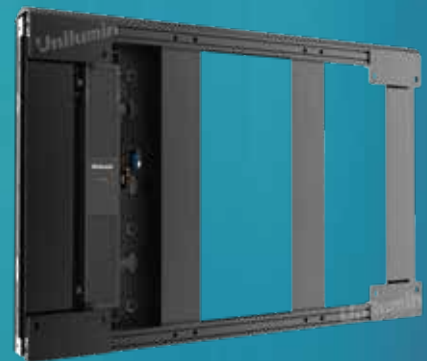
USportMB10

INDOOR SOLUTION

- Standard Mounting Structure.
- Designed for Indoor Stadiums.
- Specially Designed for Indoor Ring Stand.

Standard Mounting Structure

The steel structure of the USportMB10 is convenient for engineering construction and improves efficiency. Maintenance design on the case = no need for auxiliary equipment, and simpler for installation, which saves labor costs.



Designed for Indoor Stadiums

In the humid environment, the display products have high protection grade, which can meet the high reliability of display products in sports competitions.





Aviation Connector Design

Designed for fast, convenient and stable connection of power and signal lines.

Heat dissipation slot design of power box are compatible with the traditional fan design and it has no noise and stable system operation

Parameter	Value
Pixel Pitch	10.417mm
LED Type	3-in-1 Black SMD
Brightness	2,000 cd/m ² (nits) calibrated
Pixels Per Panel	48 x 96 pixels
Pixel Density	9,216 pixels/m ²
Weight Per Panel	14 kg (30.9 lbs)
Module Size	W250mm x H250mm / (9.8in x 9.8in)
Cabinet Size	W500mm x H1000mm x D108mm / (19.7in x 39.4in x 4.3in)
Aspect Ratio	1:2
Material	Die-casting Aluminum
Ingress Protection	IP43
Operating Temperature/Humidity	-20°~ +45° / 10~90%RH
Storage Temperature/Humidity	-30°~ +60° / 10~90%RH
Maintenance	Front or Rear
Horizontal / Vertical Viewing Angle	140° / 110°
Color Temperature	2000-9300K Adjustable
Brightness Control	Manual/Automatic
Contrast Ratio	5000:1
Input Power (Max/Typical)	280W/94W per panel
Video Frame Rate	50/60 Hz
Refresh Rate	3840 Hz
Input Voltage	100~240VAC
Input Power Frequency	50~60 Hz
Input Signal	DVI/HDMI/VGA/SDI/DP/AV
Certification	TUV-CE/UL/CB/FC C/IC/RoHs

Specifications are for reference only and are subject to change without notice.