



## USurfaceIII 6

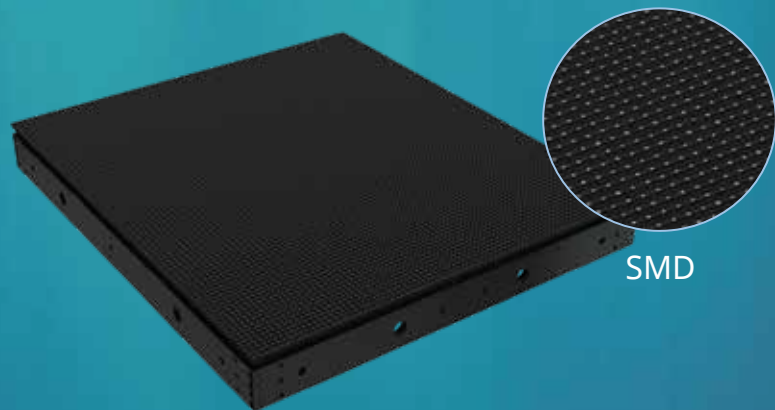
### OUTDOOR SOLUTION

- High Brightness, Up to SMD 10,000nits.
- High Contrast Ratio.
- Greater Wide Viewing Angle.
- Front and Rear Maintenance.

### High Brightness & Contrast

---

SMD creates a better viewing effect with less sunlight reflecting on the surface.



### Wide Viewing Angle

---

The viewing angle of SMD is overall wider than DIP. Wider viewing can reach a greater range of visibility to improve efficiency of advertising, with USurfaceIII the possibilities are endless.

## Front and Rear Maintenance



Front and rear maintenance makes for a much easier operation in different applications, and installation so easy that one individual can handle setup.

Parameter	Value
Pixel Pitch	6.7mm
LED Type	3-in-1 SMD
Brightness	6,500 - 10,000 cd/m <sup>2</sup>
Pixels Per Panel	120 x 135 pixels
Pixel Density	22,500 pixels/m <sup>2</sup>
Weight	17.5 kg (38.6 lbs)
Module Size	W400mm x H300mm / 15.7in x 11.8in
Cabinet Size	W800mm x H900mm x D96mm / 31.5in x 35.4in x 3.8in
Aspect Ratio	8:9
Material	Die-casting Aluminum
Ingress Protection	IP65
Operating Temperature/Humidity	-20°~ +50° / 10~80%RH
Storage Temperature/Humidity	-30°~ +60° / 10~95%RH
Maintenance	Intelligent Front Service
Horizontal / Vertical Viewing Angle	140° / 120°
Color Temperature	2000-9300K Adjustable
Brightness Control	Manual/Automatic
Contrast Ratio	10200:1
Input Power (Max/Typical)	700W x 234W per panel
Video Frame Rate	50/60 Hz
Refresh Rate	1920 Hz
Input Voltage	100~240VAC
Input Power Frequency	47~63 Hz
Input Signal	DVI/HDMI/VGA/SDI/DP/AV
Calibration	Support brightness and chroma
Mounting Configurations	Fixed

Specifications are for reference only and are subject to change without notice.