



Kramer Control

Enterprise-class AV control platform

Transforming the control experience

Deliver advanced, user-friendly control in any space, quickly and easily. A cloud-based, enterprise-class AV control platform, Kramer Control transforms the control experience, end-to-end. Going far beyond the traditional boundaries of AV, it enables control of any in-room AV and automation devices, from anywhere. The rich library of control templates, intuitive drag & drop creation of the control interface, and instant deployment to multiple spaces together make deploying and making changes to AV control a breeze – no programming needed. End-users can operate any room with ease, through the simple touch interface. Quite simply, this is control the way everyone wants it.





Easily set up and control any space, from anywhere

Effortless configuration and personalization

Easily install, configure, and modify your control system – no programming needed! The intuitive drag & drop Kramer Control Builder makes UI personalization effortless. Start with predefined, space-specific templates designed by our UI/UX experts and easily personalize them to your needs. With borderless control, you can set up your control system from anywhere, even the other side of the world.

Fast deployment

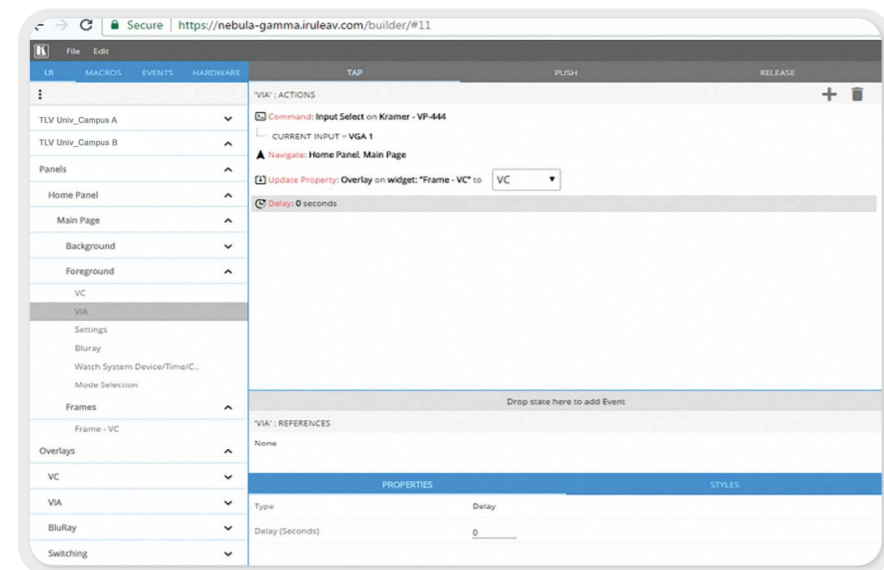
With the help of predefined templates, you can instantly build spaces and implement them without writing a single line of code. Generate multiple reference spaces from a single master, enabling one-click modifications to reference spaces worldwide. The ability to control all your spaces from one simple, IT-monitored installation saves time and effort across the board.

Versatile control

Kramer Control supports all control needs in any space, including audio, video, collaboration, and AV infrastructure – one control builder, one design, any device.

Always up-to-date

All Kramer Control components can be automatically and seamlessly updated from the cloud, offering the convenience of effortless updates. You have the option to disable auto-updates and the choice to initiate remote brain software upgrades or not.



Robust control for large-scale deployments

Outstanding functionality, superior stability

Featuring outstanding compute power and enhanced management capabilities, the KC Virtual Brains can be installed in-room, or anywhere on the LAN, for easy control of a single space, or of multiple spaces, adding virtual brains as required. Kramer Control offers robust support for an extensive library of device drivers, enabling seamless integration of custom drivers. It also accommodates a wide range of protocols and authentication methods.

Secured, IT-friendly control

With cloud-based connections, Kramer BRAINware offers versatile deployment modes, supporting varied security and operational needs. Choose the mode that best suits your requirements:

- Cloud + online brain – Kramer Control works on the cloud, with online connectivity for regular data updates to the cloud.

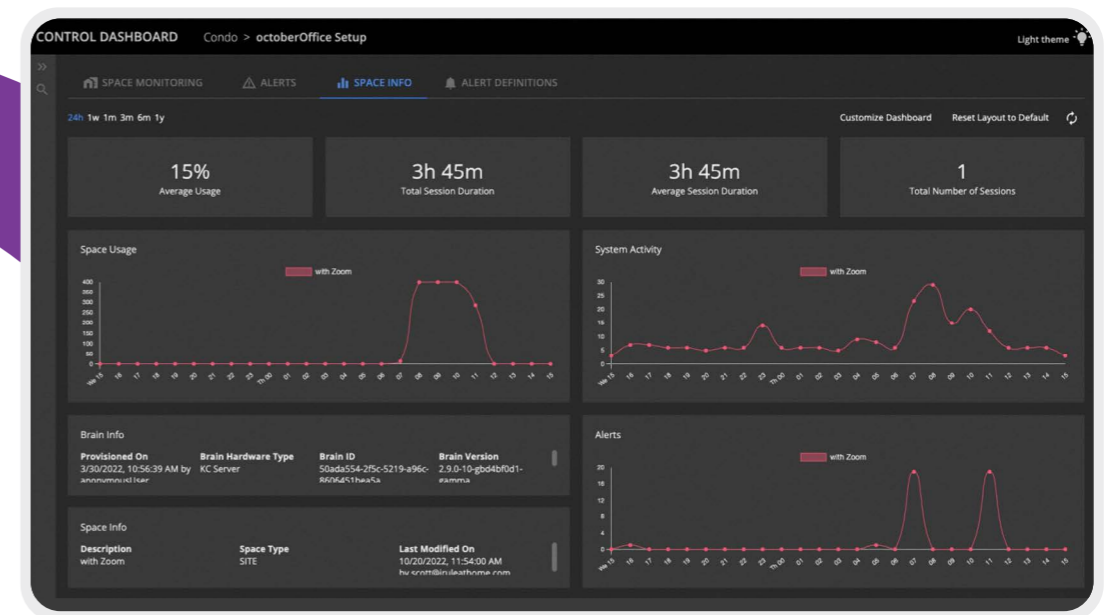
- Cloud + offline brain – The control is built on the cloud, but the brain is configured to work in offline mode, so no data is sent to the cloud.
- Kramer's new Android 11-based touchscreen panels come with built-in security, further protecting the network and connected devices.

Advanced dashboard

Stay on top of device and AV network status in real time, with customized alerts and an advanced dashboard. With the status of all brain machines visible at a glance, and the ability to effortlessly search every dashboard element, users can easily focus on priority data and information.

Drag & drop design interface

System design is easy with the intuitive drag & drop functionality of Kramer Control. You can design, configure, and modify control systems without delving into complex programming.





Versatile panels for easy control at a touch

Elevate the user experience, with our highly responsive touch panels that make controlling all room devices simple, even for first-time users. The Kramer touch panel family offers a wide choice of sizes with an unparalleled blend of style, functionality, intuitive operation, and sleek design for today's meeting rooms.

User-friendly interface

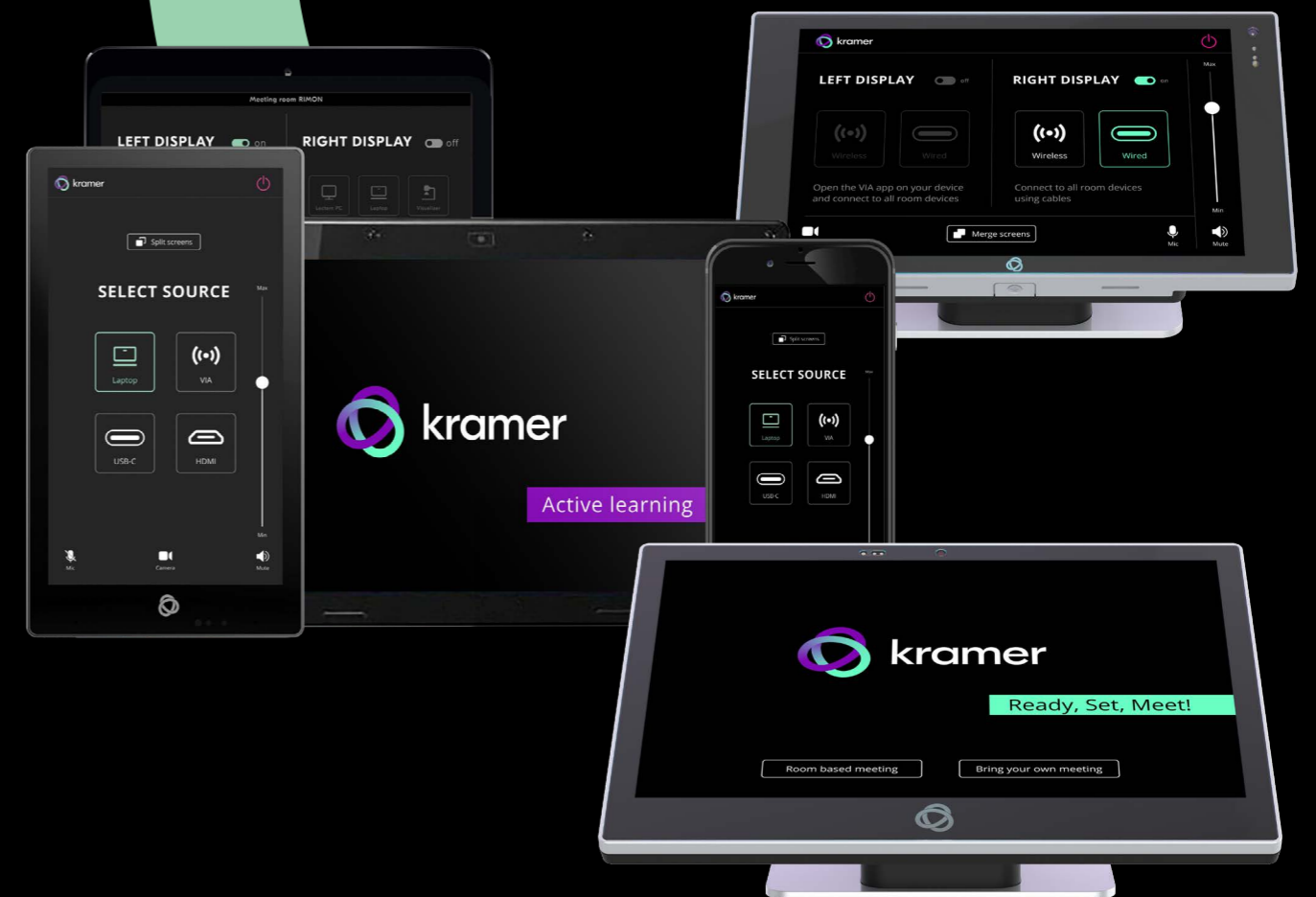
Designed with the end-user in mind, Kramer touch panels enable intuitive interfaces so that users can simply touch the on-screen icons or slide the volume slider to control the in-room technology and connected devices. The high-performance touch panels respond promptly, with no discernible lag, helping keep meetings running smoothly and efficiently.

Clear control in any space

Kramer's touch panels are available in 5.5-inch, 8-inch, and 10-inch models. They provide crystal-clear resolution up to 1920x1200. With a choice of wall-mounted or tabletop installation, Kramer touch panels fit with any room design, offering wide viewing angles, ambient-light sensing, and multi-touch capabilities that ensure a superior interaction experience.

Secure panels, assured connectivity

Powered by Android 11, Kramer touch panels come with integrated security measures to protect against potential breaches and unauthorized access, including password protection and hidden control buttons. Connectivity is a breeze with built-in wired PoE, and advanced Wi-Fi options, complemented by optional Bluetooth. Streamlined wiring makes assembly easy, and secure mounting options ensure robustness.





Seamless end-user experience

Make controlling a space as easy and intuitive as using a smartphone. End-users can control AV and other in-room devices through a simple touch interface – enabling them to focus on their actual work instead of working to control the room.

Intuitive control

Operating any space is effortless, even for inexperienced guest users. The predefined templates are optimized for fast and intuitive use by anyone. You can use Kramer Control on any of the Kramer touchscreens or on any Android device.

Control with Microsoft Teams®

Kramer Control also offers the option to control rooms using Microsoft Teams® solutions. For installations requiring MTR integration, the Kramer Control user interface can be integrated on a Yealink MTR tablet.

Full room control at a touch

Give users one-touch control of the entire space. Kramer Control enables users to operate all in-room technology, including cameras, microphones, displays, lights, window shades, and thermostats, all from the same touchscreen or keypad.

Intelligent, high-performance control

Efficiently operate comprehensive room control no matter how many rooms and devices are connected on your network. Kramer Control, a user-centric, enterprise-grade platform, drives all AV system capabilities, ensuring that even large-scale installations run smoothly.

Effortless scalability

Suitable for both small rooms and large, complex spaces, Kramer Control can efficiently handle multiple devices and configurations. Leveraging the power of the Kramer Control cloud platform, it provides a streamlined method to operate multiple devices over Ethernet or legacy control methods using gateways. Up to five instances of Kramer BRAINware can be hosted simultaneously on the Kramer Control Virtual Brain5 hardware.

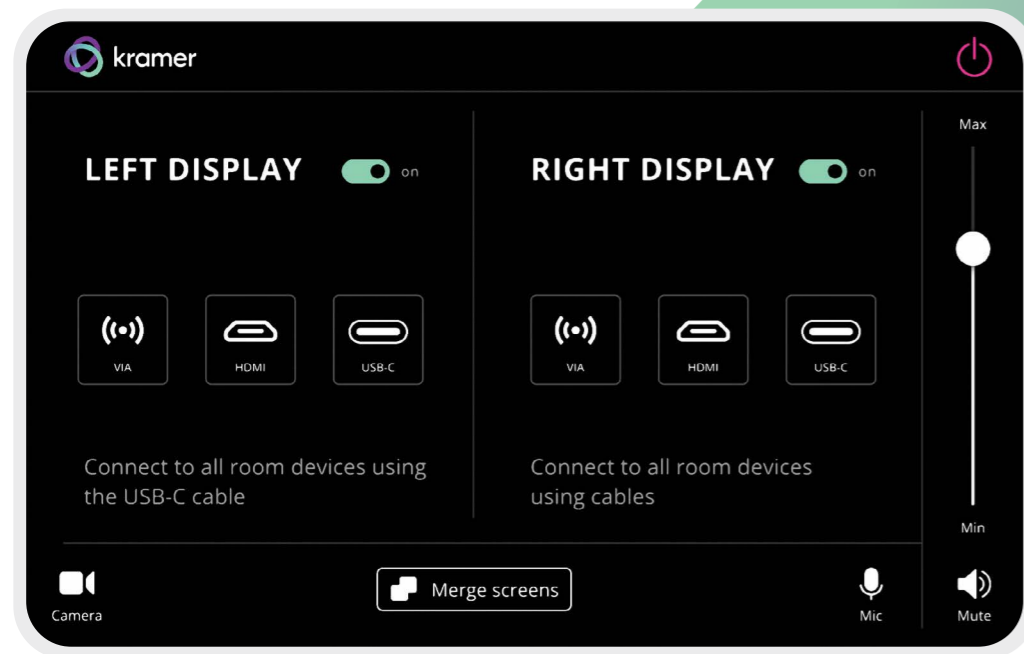
This advanced setup allows seamless control of up to five distinct spaces, each potentially comprising any combination of devices such as scalars, monitors, lighting systems, touch panels, and keypads.

Secure connectivity options

Kramer Control offers versatile deployment modes, supporting varied security and operational needs.

Real-time monitoring

The advanced dashboard gives a birds-eye view of all connected devices and AV network status, with real-time alerts and updates.



About Kramer

Kramer audio-visual experiences power creativity, collaboration, and engagement. From AVSM to advanced cloud-based communication, collaboration and control solutions, Kramer creates audio-visual experiences that are more engaging, more inclusive and more connected than ever before. Headquartered in the heart of Startup Nation - Tel Aviv, Israel, with locations around the world, Kramer's audio-visual experts are designing the future of engagement technology. Physical and digital boundaries have blurred. But no matter how hybrid our world becomes, our desire for real, human connection will never cease. Kramer's intuitive, seamless technology breaks down walls, bridges gaps, and makes people feel closer together even when they're far apart.



www.kramerav.com

October 2023