

# Produce Sports Like A Pro. Anywhere.



## 3Play™ Mini

Go anywhere – cramped arenas, remote locations, or across campus. With 3Play Mini you can deliver top-level sports productions to your fans from wherever the action happens.

3Play Mini fits in a backpack, sets up in minutes, and comes fully loaded with all the tools you need to create engaging content for your fans. Start with 3Play Mini's instant replay capabilities, expand into super-resolution slow motion replay, and explore the fully stocked suite of stingers, customizable graphics, scoreboard feeds, and more.

Plus, while you record the action, you can share clips to social media – getting even more fans and viewers involved, and increasing the value of your brand.

Be where the action is. Create championship-level sports productions. Engage your fans and viewers. Do it all – anywhere – with 3Play Mini.

### Why 3Play Mini?

#### It Goes Anywhere

Create high-end sports productions wherever the action happens.

- Compact design fits in a backpack
- Sets up with a minimal footprint
- Carry-anywhere lightweight package

#### It's Quick to Set Up

With simple connections, cabling, and operation, the 3Play Mini sets up quickly, so you don't miss any of the action.

- No difficult software installation or hardware configuration necessary
- Only one person needed to set up and manage the system
- Start producing sports right out of the box

#### It Has Everything You Need

3Play Mini includes all of the power and features of more expensive systems.

- Switch cameras; clip, tag, and save highlights; add graphics, titles, and logos to live or recorded content
- Record for on-demand viewing or post-game editing, and share to social media in real time
- Preview your live output (or any input) on a 7-inch LCD screen built into the case
- Easily connect to NewTek TriCaster for live streaming



The only live sports production suite you can carry anywhere.

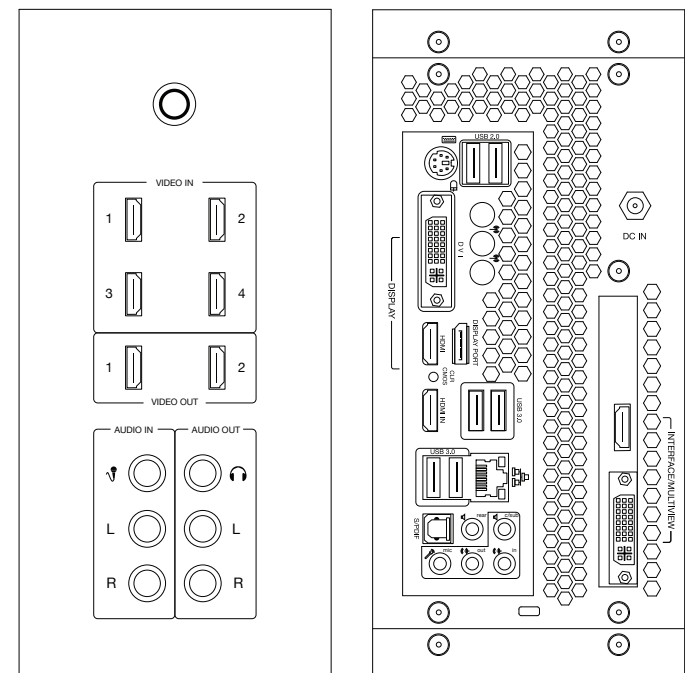


VIDEO & AUDIO	
Video Input	Plug-and-play input of up to 4 HDMI camcorders
Video Output	2 fully independent HDMI playout channels, plus video-only HDMI and DVI display ports
Audio Input	Embedded audio from 4 HDMI inputs, plus 1/4" (6.35 mm) jacks for mic and line input
Audio Output	Embedded audio from 2 HDMI outputs, plus 1/4" (6.35 mm) jacks for line output and headphones
Network Input	Use any supported device on the same network as an overlay source, including computers, wireless Apple® AirPlay® devices, NewTek LiveText™, and more
Network Output	Ethernet port for A/V output to TriCaster® over a local network
Video Formats	NTSC: 1080/30p, 1080/60i, 720/60p, 720/30p, 480/60p (Multi-Standard also includes: NTSC-J 1080/30p, 1080/60i, 720/60p, 720/30p, 480/60p; and PAL 1080/25p, 1080/50i, 720/50p, 720/25p, 576/50p)

REPLAY & HIGHLIGHTS	
Recording	Full resolution ISO recording of up to 4 simultaneous video input signals in high-quality QuickTime® format
Playback	Variable-speed playback from -200% to 200% via on-screen controls, Web CS, or optional hardware control surface
Play List	Build highlight reels with transitions and background music for playback or export
Publishing	Upload video and images directly to YouTube™, Facebook, and Twitter™, export content to FTP servers, and copy files to storage locations
Transitions & FX	Built-in TransWarp effects engine for transitioning between playout channels and between playlist clips, plus Animation Store Creator for custom effects

TOOLS	
Asset Management	FastClip asset management system, keyword tagging engine, and support for external MAM platform integration
Color Correction	Adjust input color characteristics using proc amps, advanced shading, or automatic color correction
Macros	Record your favorite settings, commands, or operation sequences, then create custom single-step shortcuts to simplify or automate control
Overlays	Real-time layering of titles, graphics, or video over live action or replay
Scoreboard Integration	Feed real-time data from compatible scoreboards into on-screen graphics over local network via NewTek LiveText or compatible third-party solutions

PHYSICAL	
Size	4.6 x 9.2 x 7.9 in (11.7 x 23.4 x 20.1 cm)
Weight	9 lbs (4.1 kg)
Case Display	7.0 in (17.8 cm) LCD screen for output display (A or B playout channel)
Monitoring	DVI and HDMI monitor outputs for user interface and multiview preview displays
Storage	2 x 750GB internal drives accommodating a total of ~30 hours of HD video (varies by resolution and format; capacity expandable using additional supported storage)



Subject to change without notice.

For complete technical specifications, please visit the 3Play Mini product page at [www.newtek.com](http://www.newtek.com). Multi-standard pricing and availability may vary. Please contact your local reseller for details.

©2016 NewTek, Inc. TriCaster and LightWave 3D are registered trademarks of NewTek. 3Play, LightWave, Broadcast Minds, ProTek and TalkShow are trademarks and/or service marks of NewTek, Inc. LightWave 3D is a registered trademark of NewTek.