



**carousel**  
BRIGHTSIGN CONFIGURATION  
QUICK START GUIDE

**INITIAL SETUP & CONFIGURATION**

**1 STEP ONE**

Download the Carousel for BrightSign Deployment Tool and BrightConfig App from [trms.com/support](http://trms.com/support)

**2 STEP TWO**

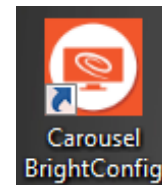
Install the Carousel for BrightSign Deployment Tool on the Carousel Server.

**3 STEP THREE**

Install Carousel BrightConfig on a Windows Computer that has an SD card reader/writer installed or attached.

**4 STEP FOUR**

Insert an SD card into the computer and launch the Carousel BrightConfig app from the Windows Desktop.



**5 STEP FIVE**

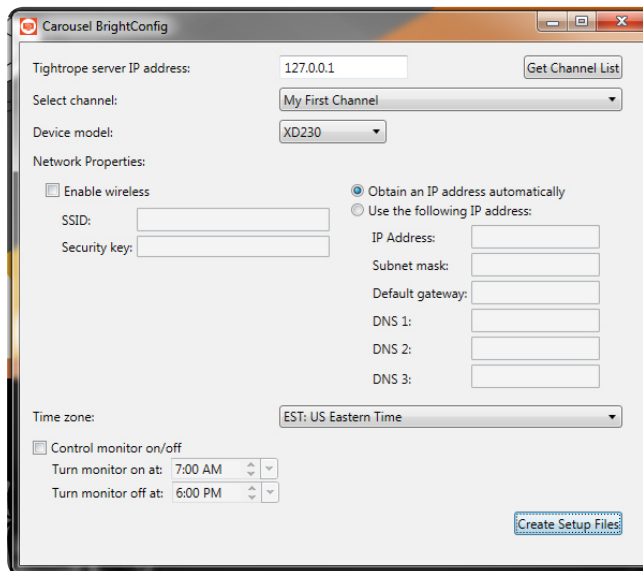
Enter the IP address of your Carousel Server (as it will be seen from the BrightSign unit).

**7 STEP SEVEN**

Select your BrightSign unit model.

**9 STEP NINE**

Select the time-zone the unit should operate on.



**6 STEP SIX**

Click **Get Channel List** and choose the channel you would like the unit to play.

**8 STEP EIGHT**

Choose your network properties (wireless requires an additional optional module).

**10 STEP TEN**

Set the monitor control on/off times (HDMI CEC only).

**11 STEP ELEVEN**

Click **Create Setup Files** and choose the SD card to write them to.

**12 STEP TWELVE**

Eject the SD card from the computer and insert it into the BrightSign unit.