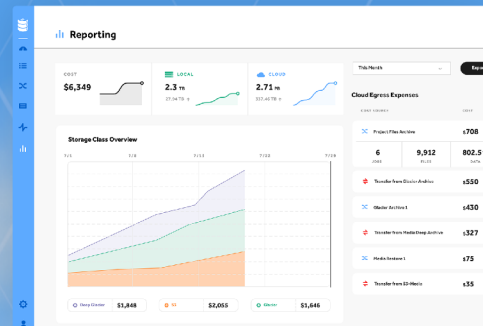




# SoDA

Refreshing Data Management.



## Key Features

### Hybrid Data Movement

Ability to copy/move data between on-prem storage and cloud solutions.

### Dry Run

Visibility into ingest and egress costs before you execute data movement.

### Insight into Cloud Costs

Track spend by job, business unit and storage tier, including historical cost metrics.

### Control Budget

Set hard or soft limits on cloud spend.

### Policy Driven Data Movement

Set automated policies with custom filters on your data sets to move only what you want, when you want it.

### Simple Automated Updates

SoDA updates automatically with the latest features and fixes.

### Vendor Agnostic

Supports all major file and object protocols.

### Data Integrity

Checksum validation of every move or copy.

### Software or Appliance Deployment

Deploy SoDA in your VMware environment or a single or multi-node cluster appliance.

### API Integration

Rich API to allow 3rd party software to leverage the insight and control of data movement.

## Intelligent Data Management

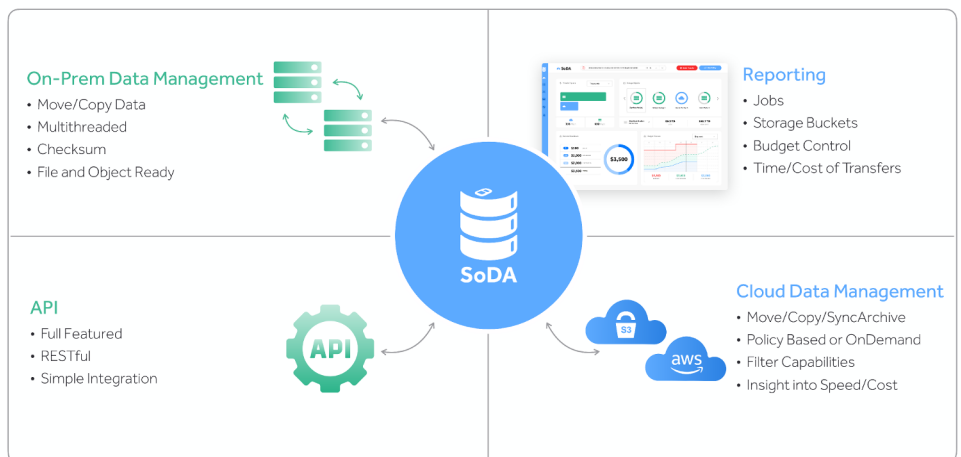
Organizations with large amounts of unstructured data are increasingly faced with the challenge of balancing the cost of capital expenditures for on-prem storage against the cost of storage options available in the public cloud. Having a solid data management strategy is critical to meeting your business objectives.

The complexity of managing data from on-prem to the cloud can often cause confusion for customers. With multiple cloud storage options, including different pricing models and SLA's, it's often hard to choose the right cloud solution for your business.

Every customer's needs are different, but their common link is the need to simply and intelligently move data between storage tiers.

SoDA, intelligent data management, predicts the cost and speed of data transfer to and from the cloud, saving time and money. SoDA puts you in control of your budget, providing valuable insight needed to make smart storage decisions.

Designed to work with on-prem, hybrid, and cloud storage, users can define rich policies or manually transfer data. SoDA automatically monitors and tracks every job, generating reports on-demand for departmental chargebacks and client billing. Flexible API integration with 3rd party applications bring clarity to any workflow. SoDA provides unlimited data movement with a subscription-based pricing model.





## Simplicity

SoDA is designed and engineered to be simple to buy, simple to use, and simple to reduce data management costs and complexity. Delivered as a managed service including the hardware or as software only, SoDA can be deployed for you and maintained remotely so you can reduce your data management costs and your administration complexity at the same time. SoDA's consolidated approach to storage and data movement means you have one easy-to-use interface for monitoring, managing, automating, and optimizing transfer and archive jobs without juggling screens, reports, and tools from dozens of storage and cloud vendors. SoDA even consolidates your cloud SLAs and storage credentials to simplify administration.

## Control Your Budget

We believe that it's your data and you should be able to move it as much and as often as needed without recurring data management costs. SoDA has no capacity limits, no utilization costs, no periodic billing, and no surprises at the end of every month.

## Real-time Monitoring

Many storage transfer tools can't provide progress information for jobs because they don't actively monitor the process. This may work for small jobs, but can be disastrous for large ones. SoDA provides pre-start estimates and real-time updates of transfer times. This eliminates the guessing game of how long it will take to send or receive content from one platform to another.

## Predictive Analytics

SoDA's unique dry run predictive analytics feature provides the insight you need to control the project time and costs before you trigger a data move. It combines network speed with cloud costs to help you choose the most appropriate settings for the job. Now you can understand the cost implications of getting your data in two hours vs two days.

## Consolidate Data Management

Imagine a single application window that provides all the information and tools you need to administer moving data across storage platforms, while keeping track of who moved what where and is so easy that it requires no special training to operate. That's SoDA.

## Supported Platforms

A data management system that doesn't speak all the protocols you need isn't going to be very useful. SoDA is agnostic and multilingual, designed to put you in control over all the systems in your facility including SAN and NAS platforms, Fibre and Ethernet connectivity, and SMB, NFS, and Object protocols. SoDA also automatically gathers your cloud provider's SLA from your account so you can steer data into the most appropriate buckets to improve access and manage costs. Cloud-based cold archive retrieval pricing can be complicated. SoDA shows you your negotiated rates for all retrieval speeds before you download so you're fully aware of cost options.





## Storage Protocols

SoDA supports data access on the following storage protocols: SMB, NFS and S3.

## SoDA Hosting Options

Vmware Deployment				
ESXi	CPU	Storage	Memory	Ghz
6.5 or above	16 vCPU	1 TB	32 GB	2+

Appliance					
Connectivity					
		<b>1Gbe</b>		<b>10Gbe</b>	
S100		(2) 1Gbe		(2) 10GbE SFP+	
S300		(2) 1Gbe		(6) 10GbE SFP+	
Environmental/Power					
	<b>Watts (input/max)</b>	<b>Airflow</b>	<b>BTU</b>	<b>Sound</b>	<b>Airtemp</b>
S100	299/412	28.8 CFM	982/1408	6.8 Bels	18 C/32.4 F
S300	864/1236	86.4 CFM	2946/4224	20.4 Bels	54 C/97.2 F
Physical Size					
	<b>RU</b>	<b>Height</b>	<b>Width</b>	<b>Depth</b>	<b>Weight</b>
S100	1 RU	42.8mm (1.68")	434mm (17.08")	714.62mm (28.13")	17/5 kg/38.6 lbs
S300	3 RU	434mm (17.08")	434mm (17.08")	714.62mm (28.13")	52.5 kg/115.8lbs

## About SoDA

SoDA is the first data mover of its kind that predicts the cost and speed of data transfer to and from the cloud, saving time and money. SoDA data management software puts you in control of your budget providing valuable insight needed to make smart storage decisions. Designed to work with all types of storage, on-prem, hybrid, and cloud, users can define rich policies or manually transfer data. SoDA automatically monitors and tracks every job, generating reports on demand for departmental chargebacks and client billing. Flexible API integration with 3rd party applications to bring clarity to any workflow. Soda provides unlimited data movement with a flat and fair subscription-based model.