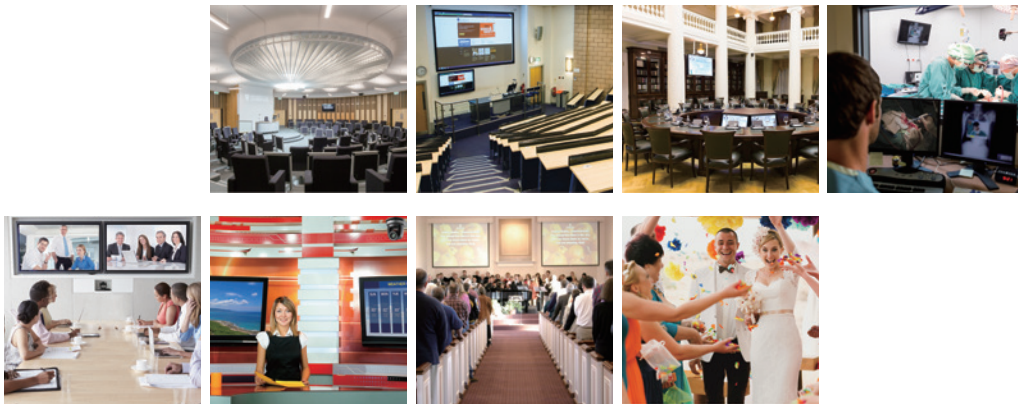


# PTZ CAMERA FAMILY BROCHURE

2018 Version




4K AND FULL HD PTZ CAMERAS  
INDUSTRY LEADER IN PROFESSIONAL IMAGE PROCESSING TECHNOLOGY

4K-1080p | 60fps | 12x-30x Optical Zoom  
HDBaseT / HDMI / USB / IP / DVI / 3G-SDI



Model Name	VC-A70H	VC-A60S	VC-A51S
Photo			
Sensor	1/2.3" 9MP CMOS	1/2.8" 2MP CMOS	1/2.8" 2MP CMOS
Video Output	4K 29.97 / 25 fps	1080p up to 60fps	1080p up to 60fps
Video Output (HD)	HDBaseT / HDMI	DVI / Component / 3G-SDI	DVI-I / 3G-SDI
Video Output (SD)	NA	CVBS (C-Video)	NA
Optical Zoom	12x	30x	20x
Clear Image Zoom	1.67x (4K: total 20x) 2.0x (1080P: total 24x)	NA	NA
Digital Zoom	12x	12x	12x
Horizontal Viewing Angle	74°	65°	63°
Panning Angle	+170 ~ 170° (300°/sec)	+170 ~ 170° (300°/sec)	+170 ~ 170° (300°/sec)
Tilting Angle	+90 ~ -30° (300°/sec)	+90 ~ -30° (300°/sec)	+90 ~ -30° (300°/sec)
Aperture	F1.8 ~ F2.0	F1.6 ~ F4.7	F1.6 ~ F3.5
Minimum Object Distance	10mm (Wide) ~ 1500mm (Tele)	10mm (Wide) ~ 1200mm (Tele)	1000mm (Wide) ~ 1500mm (Tele)
Focus System	Auto / Manual	Auto / Manual	Auto / Manual
WDR	Yes	Yes	Yes
3D NR	Yes	Yes	Yes
Image Flip	Yes	Yes	Yes
Preset Positions	128	128	128
Tally Light	Yes	NA	NA
PoE	Yes (IEEE802.3af)	NA	NA
Video Stream	NA	NA	NA
Camera Control Interface	RS-232 / RS-422	RS-232 / RS-422	RS-232 / RS-422
Camera Control Protocol	VISCA / PELCO D	VISCA / PELCO D	VISCA / PELCO D

Model Name	VC-A50P	VC-A50PN	VC-B30U
Photo			
Sensor	1/2.8" 2MP CMOS		1/2.8" 2MP CMOS
Video Output	1080p up to 60fps		1080p up to 60fps
Video Output (HD)	3G-SDI / HDMI Ethernet		HDMI / USB 3.0
Video Output (SD)	NA		NA
Optical Zoom	20x		12x
Clear Image Zoom	NA		NA
Digital Zoom	NA		12x
Horizontal Viewing Angle	63°		72°
Panning Angle	+170 ~ 170° (120°/sec)		+100 ~ 100° (100°/sec)
Tilting Angle	+90 ~ -30° (120°/sec)		+30 ~ -30° (100°/sec)
Aperture	F1.6 ~ F3.5		F1.8 ~ F2.8
Minimum Object Distance	1.2m		500mm (Wide) ~ 1200mm (Tele)
Focus System	Auto / Manual		Auto / Manual
WDR	Yes		Yes
3D NR	Yes		Yes
Image Flip	Yes		Yes
Preset Positions	128		128
Tally Light	Yes		NA
PoE	PoE+ (IEEE802.3at)		NA
Video Stream	RTSP / RTMP	RTSP / RTMP / NDI HX	YUV422 / MJPEG
Camera Control Interface	RS-232 / RS-422 Ethernet		RS-232 / USB
Camera Control Protocol	VISCA / PELCO D ONVIF	VISCA / PELCO D NDI HX	VISCA / UVC

# Accessory



## VC - HDTX / HDRX

HDBaseT Extension Kit

- Supports PoE+, uncompressed video and IR/RS-232 control over a single CAT 5e/6 cable up to 328ft/100m
- HDMI video up to 1080p and 4K resolution
- Compatible with Lumens VC cameras and wall mount (VC-AC08)



## VS - K20

Compact Camera Controller

- Joystick for Pan/Tilt/Zoom and focusing
- Easy operation of versatile camera adjustments
- The RS-232 / RS-422 communication interfaces allow long-distance communication
- High brightness OLED display
- Auto backlight keys
- Multi-level protection from illegal operation and settings



## VC - AC03

Thin Profile Wall Mount

- Wall mount for VC-B30U USB PTZ camera



## VC - AC06 / 07

Cable Extender

- Extend the distance between the controller and cameras up to 300ft (100m) via the RJ45 CAT 5e/6 cable
- The VC-AC07 supports the daisy-chain to link up to 7 cameras



## VC - AC08

Wall Mount

- Wall mount for VC-A70H / VC-A60S / VC-A51S / VC-A50P
- Rigid design with cable cover

[www.MyLumens.com](http://www.MyLumens.com)

**Lumens**<sup>TM</sup>  
Brilliance by Design

### Lumens Digital Optics Inc.

5F-1, No.20, Taiyuan St.,  
Jhubei City 302, Taiwan  
TEL : +886-3-552-6255  
FAX : +886-3-552-6257

### Lumens Integration, Inc.

4116 Clipper Court  
Fremont, CA, 94538  
TEL : 888-542-3235  
FAX : 510-252-1389

### Lumens 苏州分公司

江苏省苏州高新区嵩山路  
89号狮山工业廊7号3楼  
电话 : +86-512-68788923  
传真 : +86-512-68788909

### Lumens Europe

Stationstraat 5  
1730 Asse, Belgium  
TEL : +32 (0) 2-452-7600  
FAX : +32 (0) 2-452-7600

### Lumens United Kingdom Sales Rep

TEL : +32-473-583895

### Lumens Russia & CIS Rep

TEL : +7 916 6755004